



Consultancy & Research Hub

C A R Consultancy
es And Research
H U B Hub

*Information
Brochure*

Who We Are



The Consultancy and Research Hub (CAREs-Hub) is an all-inclusive, multipurpose research organization registered under the laws of the Republic of Liberia, working to establish a vibrant research office which promotes research integrity and procedures for managing the lifecycle of research projects; developing a mechanism for evaluating the quality of research outcomes, preparing researchers and research managers for the necessary skills and knowledge needed to perform

research activities observing ethical practices and principals that provide independent research outcome void of biases. Our goal is also to grow the research and innovation enterprise, and to inspire individuals in both urban and rural communities to make decisions about local and national issues based on evidence data. We seek to partner with non-for-profit and for-profit institutions to create a space for mainstreaming rural voices in order to contribute to their community and the society, and to support accessibility, transparency and accountability through evidence data in national decision making. We seek to identify, promote and build alliances with universities and colleges on a near and long-term research opportunities and resources.

We also aim at connecting new partners and with existing research and scholarship communities, and make strategic plans to expand opportunities, and stay on the leading edge in research. Our Office will emphasize collecting and using data to determine key performance indicators of health, education, environment, agriculture and social economic issues, to support donors, and development partners make advantageous decisions. We intend to pursue more international partnership opportunities for emerging research and innovation trends and increase collaboration with internal partners. It is our goal to advance the role of innovation and entrepreneurship and foster a more pervasive culture of valuing and celebrating entrepreneurship and commercializing research discoveries.

We are also committed to providing improvement in the sectors of child education, community empowerment, agriculture, youth development and

Who We Are

career development. CAREs-Hub is managed by a group of diverse professionals with adept competencies, extensive experience and wide-ranging exposure in research and organizational management. Some of our professionals include enterprising and accomplished young practitioners, professionals with project management experience who have worked with international organizations, the public sector and policy development experts and top-notch project management engineers from renowned universities around the world.

The organization has a small, but effective resource personnel with experience in managing and implementing research and community development projects. CAREs-Hub has a structured framework to implement projects in a very cost-effective way, where projects would always be conducted with very strong integration together with local community representation and responsibilities.

Some of our staff have extensive work experience in development work with international organizations including USAID funded projects including the Education Development Center (EDC), FHI360, RTI International, UNDP, UNAIDS as well as the private sector; and providing reliable support services and consultancy to a wide variety of research, administrative and field work, and in senior level management position including Deputy Chief of Party and Senior Program Coordinator, Monitoring and Evaluation Specialist and Analyst, etc. Bottom line of the organization's philosophy is building a long-term experience in the field of development work where interpersonal relationship, reliability, assured quality and target oriented modern technology are the major building blocks. CAREs-Hub is an organization where professionals from both technical and functional field groups work together with one objective of providing effective services and innovations in development work.

Our Mission

Our mission is to be a catalyst in the research community, providing leadership in research, and enhance the capacity of young talents desirer of becoming research icons in their fields of studies.

We seek to providing high quality research services to national and international organizations (public and private), and partnering with universities across the world in providing evidence data based on research findings to support discussions and decision making in response to the changing world.

Our Core Values

Our Core-Values are built around seven (7) triggers. These triggers are meshed in quality and cost-effective program designs, strategies and project implementation.

- Teamwork
- Excellence
- Trust and confidence build-up
- Innovation
- Transparency
- Professionalism
- Commitment

What We Believe In

The key to the CARES-Hub's success is the maintenance of a close working relationship with our clients and donors ensuring best project management practices and setting SMART goals; and

establishing and maintaining a thorough knowledge and understanding of client's objectives. This strategy is in coordination with our belief of:

- Collective responsibility and leadership
- Meeting professional expectation of our clients
- Professionalism and ethics
- Adding values to our client needs

What We Do



Research Activities

- Baseline Survey
- Mid-term Assessments and Evaluations
- Endline Assessments and Evaluations
- Capacity Assessments
- Data Quality Assessment (DQA)
- Project Evaluations
- Impact Studies
- Special Studies (Agriculture, Health, Education, Climate, Environment)



Project Management

- Project Proposal
- Development
- Third Party Monitoring
- Project Portfolio Management
- Report Writing
- Monitoring and Evaluation System Development
- Research Design and Management



Capacity Development

- Monitoring and Evaluation
- Project Proposal Writing
- Small Business Management
- Research Ethics
- Data Collection Using Mobile Device
- Project Risk Management



Information Communication Technology

- IT Infrastructure System Design
- EMIS Design
- Database Development and Management



Other Services

- Talent recruitment
- Internship Research and Placement
- Scholarship Research Support

Our Experience

The CAREs-Hub team have managed and implemented series of research activities including the following among others:

- Audience Survey, Barnuseitehdeh! "Lets do the right thing!" in six counties (Montserrado, Margibi, Grand Bassa, Rivercess, Grand Cape Mount, and Nimba). Funded by Population Media Center and Talking Drum Studio.
- Women's Political Participation and Leadership (WPPL) mapping in five counties (Montserrado, Gbarpolu, Lofa, Nimba, and Maryland) in collaborations with Institute of Quality Research and Development (IQRD). Funded by Social Impact/DELTA, USAID strategic analysis.
- Baseline Survey - Knowledge Attitude and Practice (RTI International, USAID Read Liberia Activity).



Partnership Development

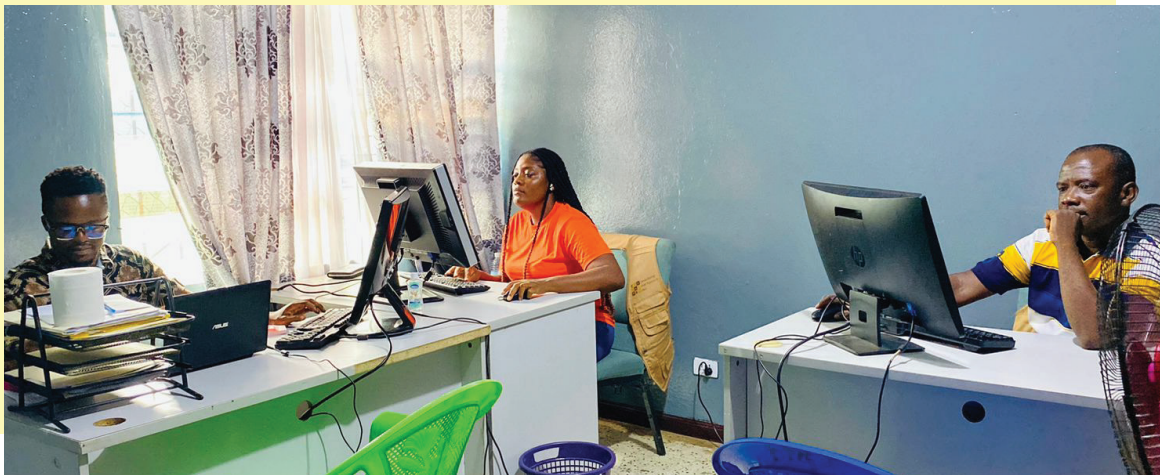
Engaging in strategic partnership development has become our key most priority. We are keen on building more ethical supply chains that mirror our corporate sustainability priorities.

Maintenance of our social enterprises is handled directly within our existing supply and value chains to promote greater Diversity, Equality, and Inclusion (DEI) across CAREs-Hub.

Cross Functional Alliances

CARes-Hub has begun establishing strategic public, private partnerships and with organizations in research and development works, to collectively meet the complete spectrum of donor requirements.

Gender Mainstreaming



CARes-Hub has a policy on gender equality in alliance with the Organization for Economic Co-operation and Development (OECD) policy on gender mainstreaming, governance and leadership. We ensure that all (both male and female) are treated equally, and providing a good work environment where all team members, regardless of their position or gender, are treated with dignity, respect, and equality.





Advancing the Research and Innovation Enterprise

Get In Touch:

Consultancy and Research Hub
(CARes-Hub)

PROJECT ONE HOUSE Building
Behind NP Gas Station, Police Academy main
Junction
Paynesville City, Republic of Liberia

Tel: +231 (77)557-8504 / (77)752-6978

Email: info@cares-hub.com

Website: www.cares-hub.com

C **A** **R** Consultancy
es And Research
H **U** **B** Hub